



BUILDER	Heesen
MODEL	44
LENGTH	44 m
BEAM	9 m
DRAFT	2.5 m
GUESTS	12
CABINS	6
CRUISE SPEED	18 knots
MAX SPEED	25 knots

PRICE**€ 12,500,000**

Heesen 458 GT

Heesen 458 GT



Length	Year	Engines	Weight approx.	Guests / Cabins	Bathrooms
44.17 m	2007	2x MTU 16V 4000 M90	250,000 kg	10 - 12 / 6	6
Beam	Material hull	Power	GRT	Fuel Tank approx.	Crew / Cabins
9.00 m	Aluminium	2x 2720 kW 2x 3698 PS	458 t	69,000 l	7 / 4
Draft	Material superstructure	Drive	Speed (Cruising / max.)	Water tank	Location
2.50 m	Aluminium	Shaft	20 kn / 26 kn	16,000 l	Turkey

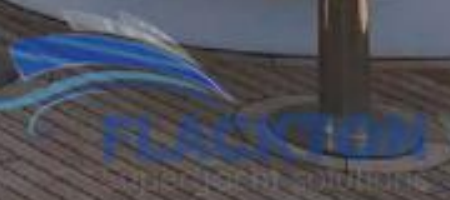
12,500,000 €

ex VAT



DY22418 / 12/22/2022








FLACKTON YACHTING
Superior solutions





Heesen 458 GT

WALKTHROUGH:

The calm and exclusive Omega Architects design is immediately noticed upon entering the saloon with the warm tones from the natural teak complimented with ample light from the large windows making it elegant and yet cozy at the same time.

Further forward is the dining area, with seating for 10 guests and very luxurious Fendi furnishings. Served on a very noble and little used Versace tableware. The combination between the wooden tiles and the white wall and ceiling panels offers a first class feel-good atmosphere.

Immediately adjacent is the hallway, in the same pleasant interior design and provides access to the sky deck, as well as access to the lower deck.

The master cabin is located on the main level and is entered through the master office. The full-width master stateroom offers a King size Bed, high light intake through the large windows as well as a second office and a seating area.

On the bow side you will find the double-sided walk-in bathroom with a huge shower, bathtub and a separate toilet and bidet. All superbly designed as the rest of the yacht with the calm and elegant tones from the bleached teak and natural off-white furnishings.

On the lower deck there are 4 guest cabins, divided between 2x double cabins and 2 x single bed cabins. Each cabin has its own bathroom, which by a combination of marble and teak wood exactly matches the comfortable features of the entire interior design of SEDATION.

Through the hallway you also reach the upper deck. The highlight on the upper deck is the sky salon with adjoining bar and private bathroom with shower. The semi-circular salon offers direct access to the outside sky lounge, which offers an alternative for dinner or cozy rounds with family and friends by 10 seats. As an added extra, the sky lounge can be converted into a 6th cabin if required. The large double bed folds out of the dark wenge wood wall and offers an unobstructed ocean view.

Back in the hallway is an internal stairway to the flybridge as well as access to the bridge. Immediately adjacent to the bridge, is the captain's cabin with a double bed and ensuite bathroom.

Arriving on the flybridge, you will find a Jacuzzi on the bow side, enclosed by sunbathing areas. An integrated bar with ice-maker, refrigerator and sink provides the appropriate catering of cold drinks and snacks.

On the aft side is a seating area for 8 people to eat snacks, communicate with friends and family or simply enjoy the view over the sea.

Drive

Steering hydraulic
Bow screw 1x hydraulic
Tail screw 1x hydraulic
Stabilizers VT Naiad, type 820 with 2 fins
Engine compartment fan

Engine 1 MTU / 16V 4000 M90
Type Inboard engine / Diesel / 16 cylinder (V-Form)
Power 2720 kW (3699 PS)
Engine hours 1480h (State 09.12.2022)
Drive Shaft
Operation electric

Engine 2 MTU / 16V 4000 M90
Type Inboard engine / Diesel / 16 cylinder (V-Form)
Power 2720 kW (3698 PS)
Engine hours 1480h (State 09.12.2022)
Drive Shaft
Operation electric

Generator 1 KILO-PAK
Type Inboard engine / Diesel / Sound cover
Power 99 kW
Engine hours 2800h (State 09.12.2022)

Generator 2 KILO-PAK
Type Inboard engine / Diesel / Sound cover
Power 99 kW
Engine hours 2800h (State 09.12.2022)

Other Gearbox: 2x ZF7600

Propellers: 2x Schaffran five blade fixed pitch Ø 1.380mm
Range: 3200 nm @ 12 kts

Exterior

Steering position	on bridge cam port, on bridge cam starboard
Wetbar	Fly (with BBQ)
Flybridge	Access via stairs, Seating group, Table, Whirlpool
Skydeck	Seating group, Table
Cockpit table	
Teakdeck	Foreship, Gangboard, Stairs to the bathing platform, Bathing platform, Aft deck, Fly Bridge, Skydeck
Sun cushion	Foreship, Fly, Aft deck, Skydeck
Hardtop roof	Shipyards construction
Reeling	Sea railing (in stainless steel), Bulwark (Aluminium)
Anchor winches	Bow (2x eL control)
Anchor 1	130 m Chain
Anchor 2	130 m Chain
Winches	2x Aft deck
Radar arch	Aluminium (foldable)
Crane	✓
Garage	Tender + Jet-Ski
Gangway	✓
Bathing ladder	✓
Deck shower	✓
Stern shower	✓
Deck washing system	✓
Other	Tender: Cirrus 6.15 m, Yanmar 197 hp, Yamaha 25 hp Jetski: 2x Yamaha fx cruiser 2007 Day-Head and Sauna in the Beach Club

Interior

Number of cabins	6 (without crew)
Berths	10 up to 12
Beds	4x Double beds, 4x Single beds
Bathrooms	6x Bathrooms, 2x Dayhead, Sauna/steam bath, Bathtub
Pantry	Salon
Dinette	Table & Chairs
Kitchen	Hob (Ceran field), Microwave, Oven, Coffee Maker, Extractor hood, Sink (Double sink), Dishwasher, Refrigerator Salon, Wine refrigerator, Freezer, Ice Maker Pantry, Washing machine, Dryer
Tanks	Water tank (16,000 l), Waste tank, Grey tank
General	Pilothouse, Deck salon, Salon, Indoor helm station, Bridge, Side doors (2x)

Crew

Crew area	Foreship
Pantry	Stove, Sink, Refrigerator
Cabins	4
Berths	7
Bathrooms	4
Other	Separate captain's cabin on the skydeck

Nautical

Echo sounder	Furuno
Sumlog	✓
Compass	✓
Autopilot	Furuno
Chartplotter	✓
GPS	✓
AIS	Furuno
VHF radio	Furuno
Radar	Furuno

Sat-Com	Sea Tel
Wind measuring system	✓
Rudder angle indicator	✓

Electrical equipment

Power supply	Shore connection, Chargers, Alternators (2x), Battery, Battery main switch
Lighting	Deck lighting, Navigation lights
Spotlights	Search spotlight
Window	Windshield wiper (4x), Windshield washer system
TV / Audio	SAT antenna (Sea Tel), TV (9x)

Water / Climate / Heating

Water system	Pressurized water system (electric), Seawater treatment, Warmwassersystem
Air conditioning system	✓

Safety equipment

EPIRB transmitter, Signal horn, Fire extinguisher, Life jackets, Extinguishing system engine room, Vessel monitoring, Camera system	
Other	Classification: ABS A1 Yachting Service AMS Large commercial Yacht Code LY2 / MCA - not active





 **FLACKTON YACHTING**





 **FLACKTON YACHTING**
Superyacht solutions



 **FLACKTON YACHTING**
Super yacht solutions









FLACKTON YACHTING
Superyacht solutions
























FLACKTON YACHTING
SOLUTIONS





 **FLACKTON YACHTING**
Superyacht solutions







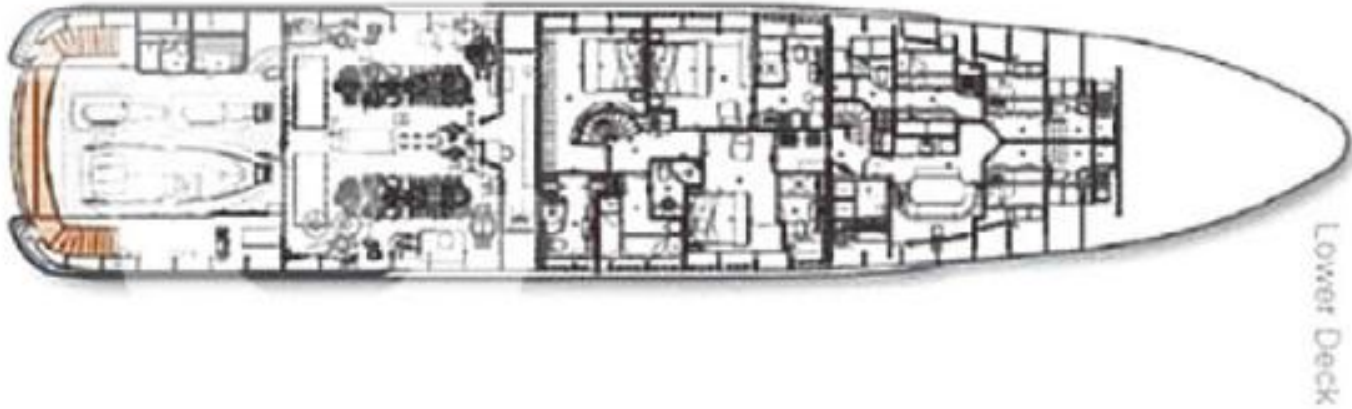
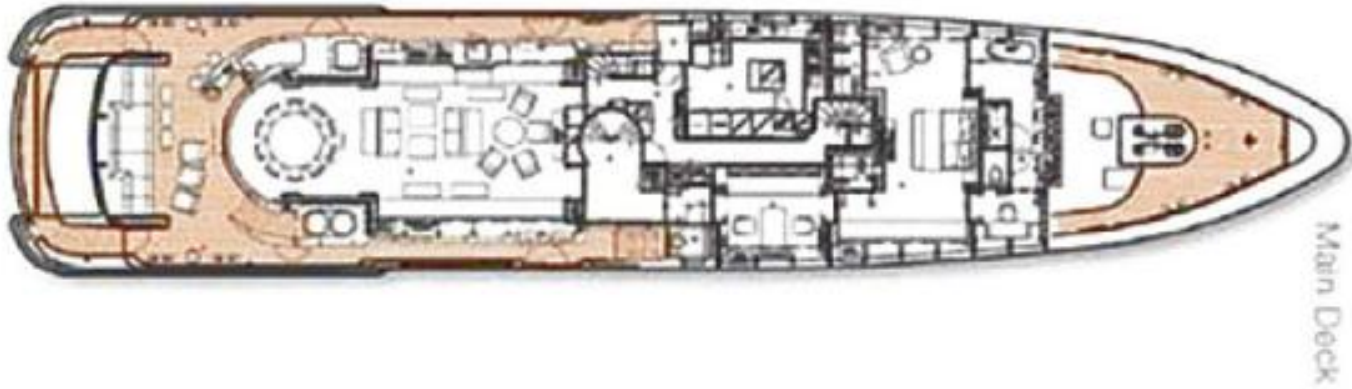
 **FLACKTON YACHTING**
Solutions

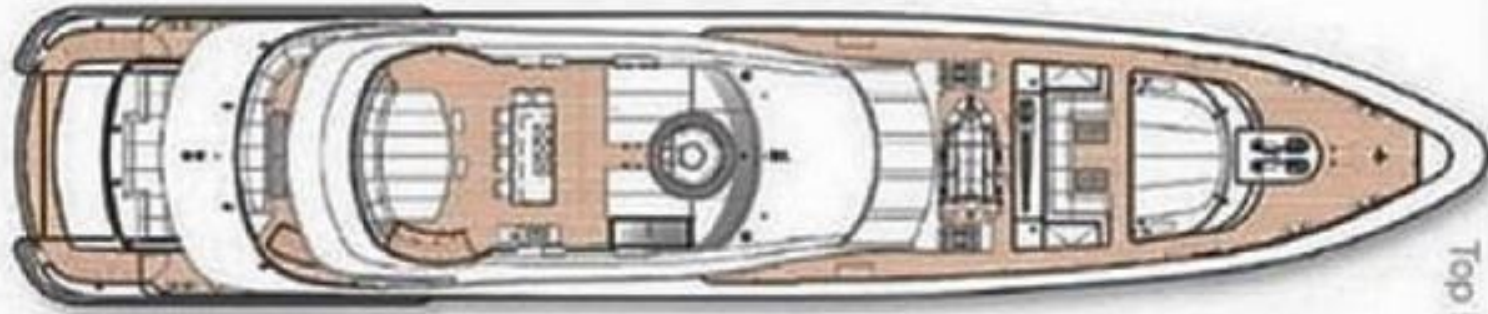


FLACKTON YACHTING
Superyacht solutions

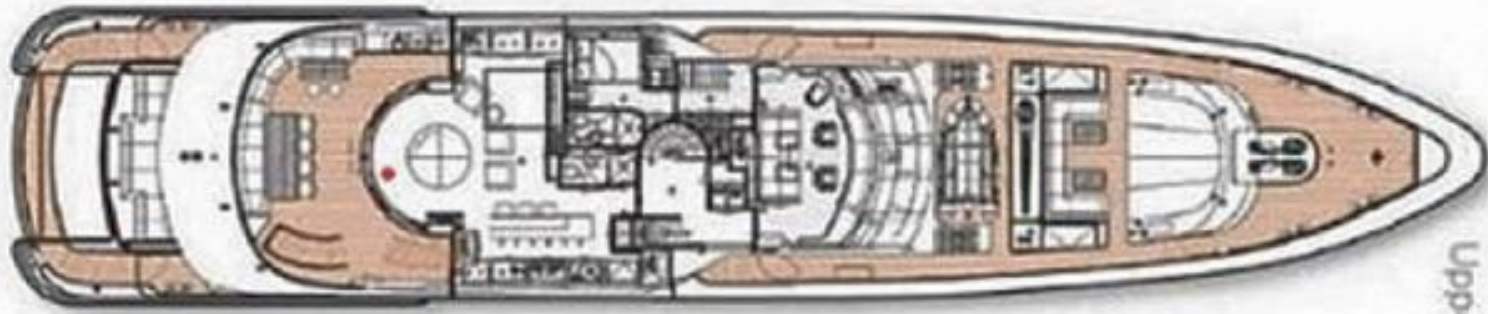


 **FLACKTON YACHTING**
Superyacht solutions





Top Deck



Upper Deck



Table of Contents**Heesen | 44****Disclaimer**

Yachts offered are subject to availability. The information provided is believed to be correct but not guaranteed and may not be used for contractual purposes. Specifications provided for information only.