



**BUILDER** Baglietto

**LENGTH** 54 m

**BEAM** 10.2 m

**DRAFT** 3.2 m

**BUILT** 2009

**REFIT** 2021

**GUESTS** 10

**CABINS** 5

**PRICE**

**€ 18,750,000**





 **FLACKTON YACHTING**  
Superyacht solutions

# Sun Deck



 **FLACKTON YACHTING**  
Superyacht solutions

## Upper Deck



Main Deck





# Inflatable Toys



## Toys



# Main Salon



**FLACKTON YACHTING**  
Superyacht solutions

## Dining Room





## Upper Salon



# Upper Salon



## Master Suite



# Master Office



# Master Bathroom



## Guest Stateroom



## Guest Stateroom



## Guest Stateroom





## Guest Stateroom

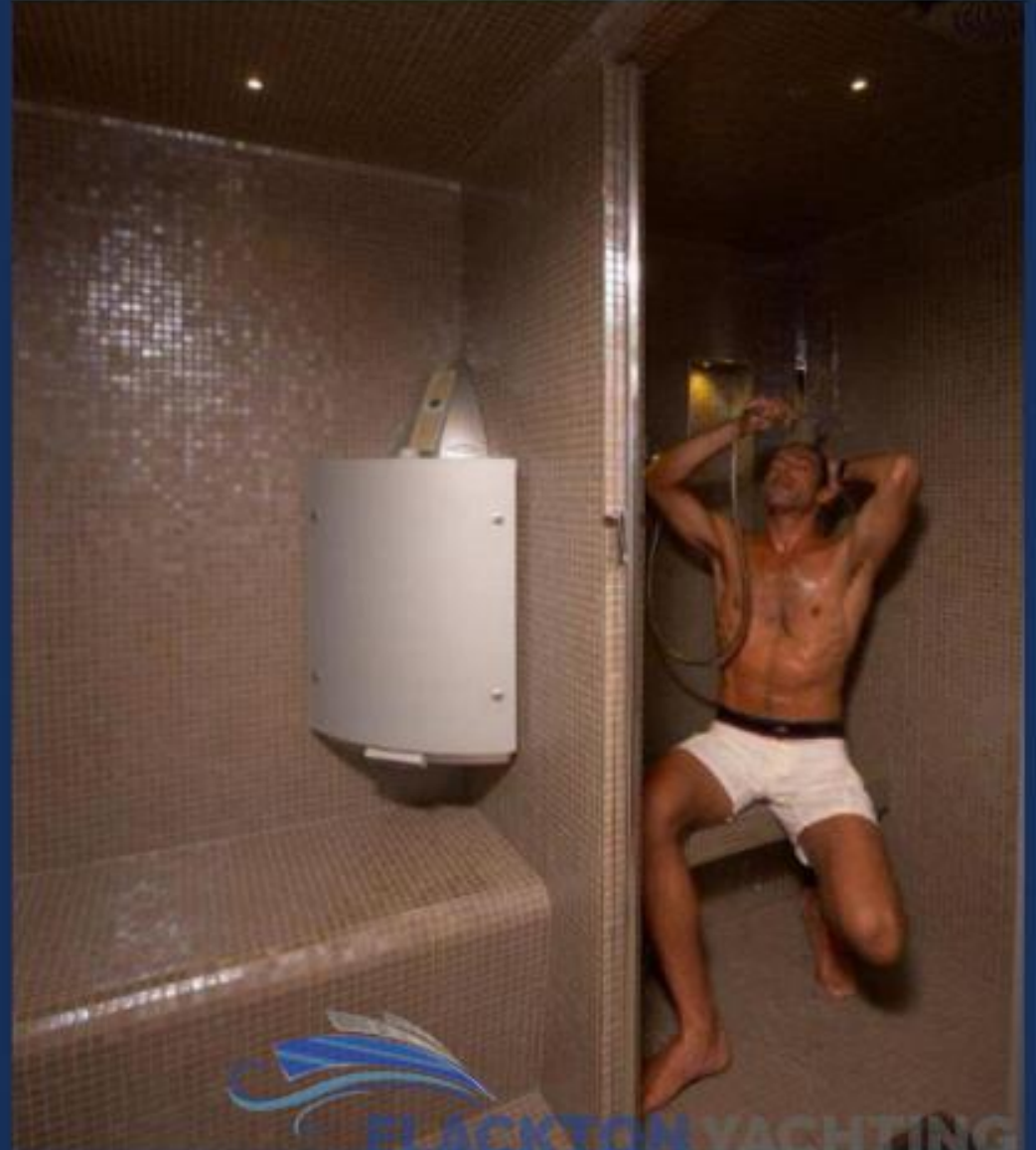


Spa

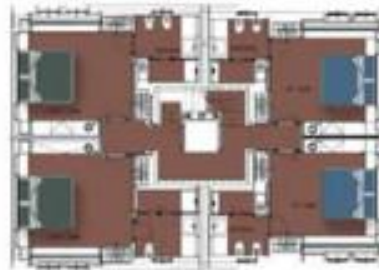
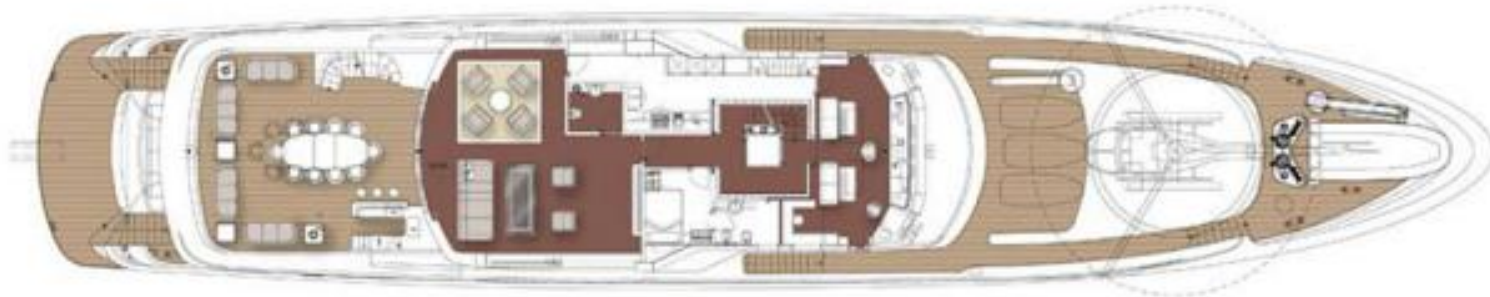


 **FLACKTON YACHTING**  
Superyacht solutions

Gym



## Sauna / Steam Room





Builder: Baglietto

Naval Architect: Baglietto

Exterior Design: Francesco Pazskowski

Interior Design: Francesco Pazskowski

LOA: 54.0m

Beam: 10.2m

Draft: 3.2m

Guests: 10 guests in 3 double and 2 twin cabins

Cruising Speed: 13 knots

Consumption: 510 Lph

Flag: Cayman Islands

Class / MCA: Lloyds, MCA Compliant

Wifi: Throughout

Tenders: RIB Tender – 6.5m BSC66 (10 passengers)

Toys: 2 x Sea Doo Jet ski RXT 260 RS

1 x Sea Doo Jet ski GTX 260 Limited

2 x Seabob

Towable Raft – Airhead Transformer (3 person)

Towable Raft – Sportssuff Shockwave 3 (3 person)

Towable Banana – Island Hopper (5 person)

Towable Donut – Sportsstuff Frequent Flyer (3 person)

Slide – Aquaglide Platinum Freefall from Sun Deck

Small inflatable slide for children put in water

Inflatable floating dock – Aquaglide Platinum

## Table of Contents

### 1. INFORMATION

## BURKUT | Baglietto

### Disclaimer

Yachts offered are subject to availability. The information provided is believed to be correct but not guaranteed and may not be used for contractual purposes. Specifications provided for information only.

## 2. INFORMATION

BURKUT is a 54m (177.7ft) motor yacht delivered in 2009 by the well know Italian shipyard, Baglietto. Her sleek interior and exterior designs are from the works of Francesco Paszkowski Design. Launched as the fourth yacht of Baglietto's Steel Hull Full Displacement Series, BURKUT is Lloyd's classed and MCA compliant.

BURKUT can comfortably accommodate 10 guests in five spacious cabins. Her full beam master cabin is located on the main deck and features a private study, a private lounge with separate day head, port and starboard sea balconies, and a walk through en suite bathroom. Four additional guest cabins can be found on the lower deck consisting of three double cabins and a twin cabin, all with en suite bathrooms.

Spacious exterior decks provide multiple options for entertainment and relaxation for all. Of highlight is the versatile sun deck which features a fitness and wellness center forward, with a jacuzzi and sun loungers aft. A large al fresco dining and entertaining area can be found on the bridge deck aft, while additional exterior lounging is located on the main deck aft.

Powered by twin 2,000hp Caterpillar engines, BURKUT features a cruising speed of 12 knots and a maximum speed of 15 knots, with a transatlantic range of 4,500 nautical miles. Zero speed stabilizers ensure a stable and comfortable cruising experience on board BURKUT.

Contact the yacht broker to receive more information or schedule a showing of this 2009 177' 2" BAGLIETTO Baglietto 53 Motor Yacht Displacement BURKUT yacht for sale in Dubai, Dubai, United Arab Emirates today!