

**BUILDER** Admiral  
**MODEL** 39M

**FLAG**



**LENGTH** 39.3 m

**BEAM** 8 m

**DRAFT** 1.8 m

**GUESTS** 11

**CABINS** 5

**CRUISE SPEED** 26 knots

**MAX SPEED** 30 knots

**PRICE**

**€ 9,500,000**









**FLACKTON YACHTING**  
Superyacht solutions





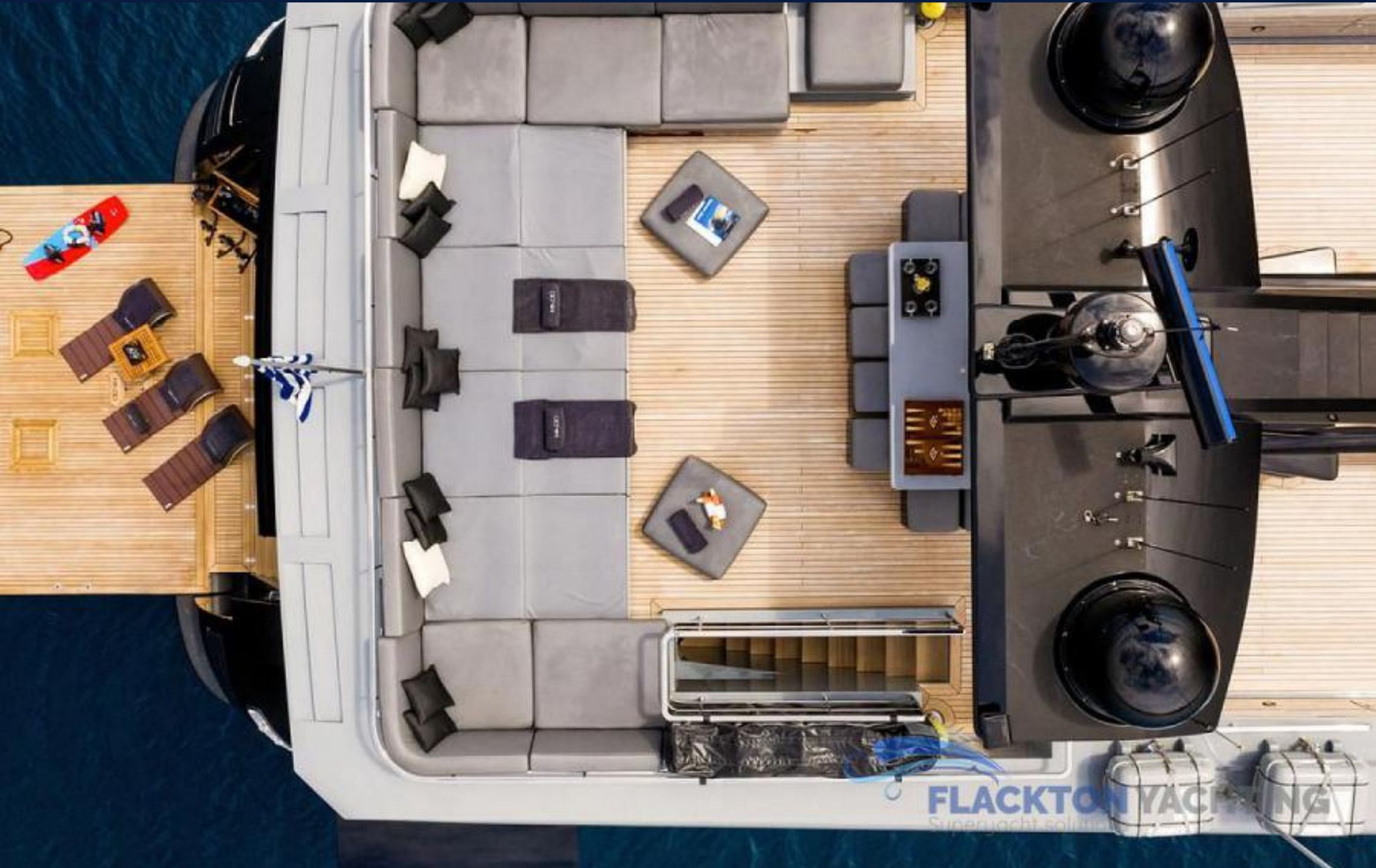






















 **FLACKTON YACHTING**  
Superyacht solutions





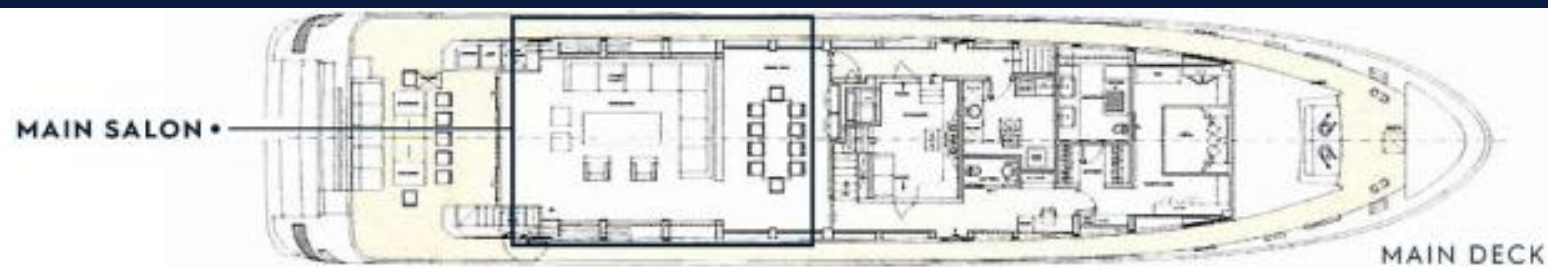




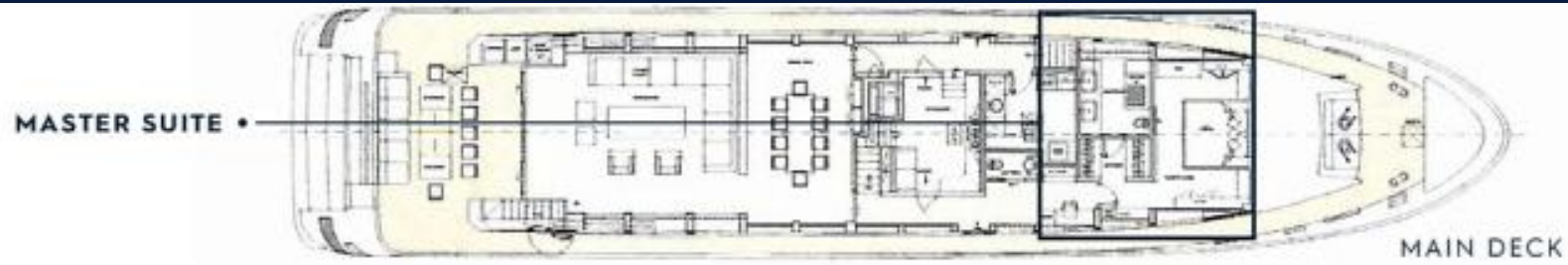


**FLACKTON YACHTING**  
Superyacht solutions









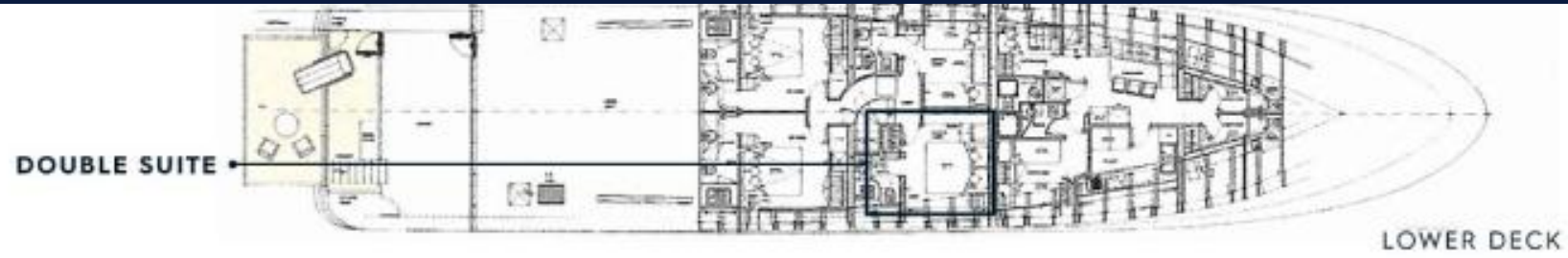








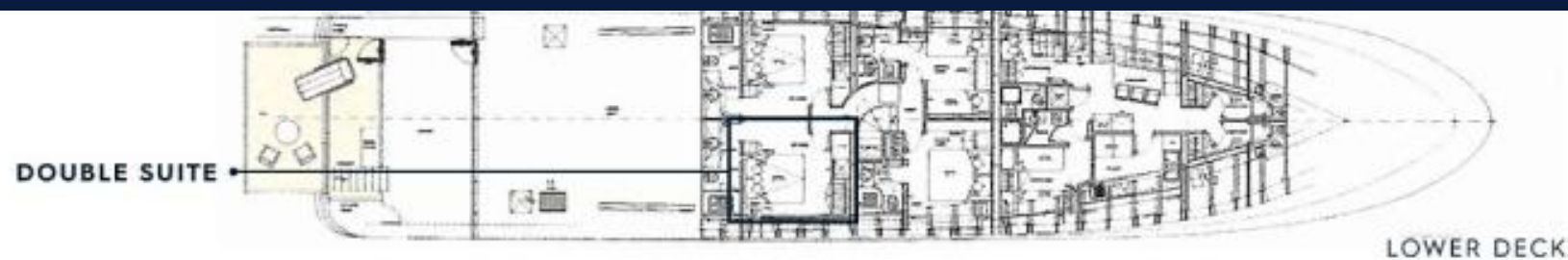
























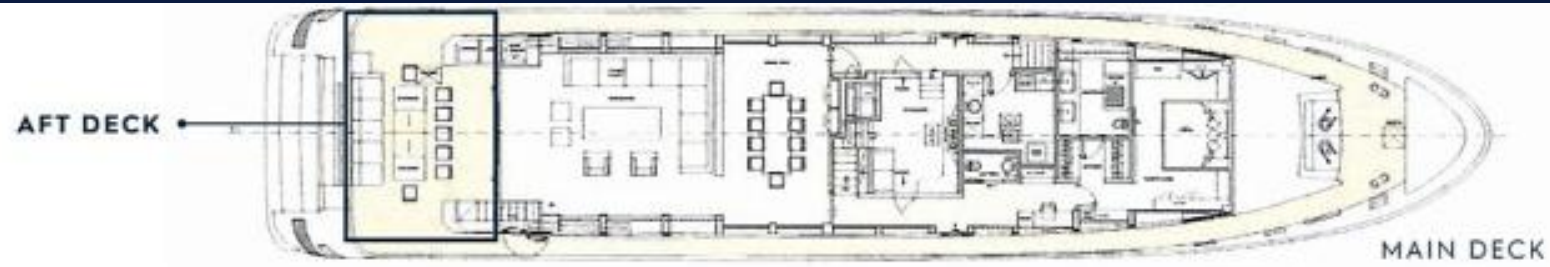








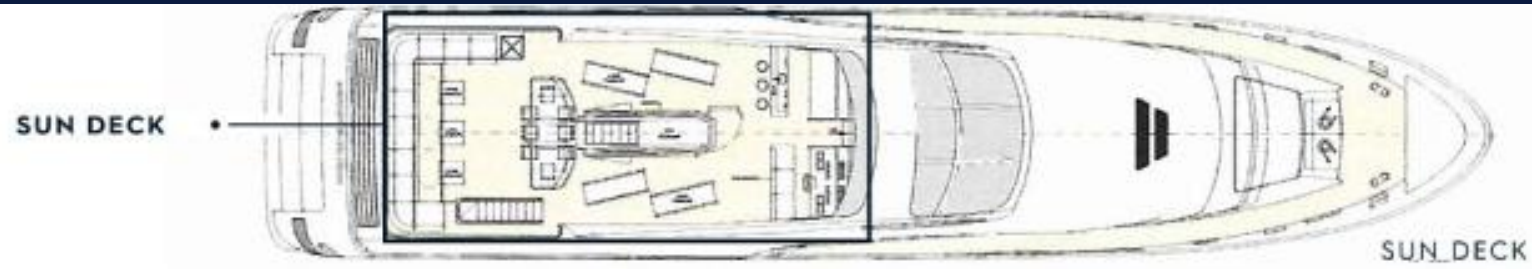




















**FLACKTON YACHTING**  
Superyacht solutions

















**FLACKTON YACHTING**  
Superyacht solutions





















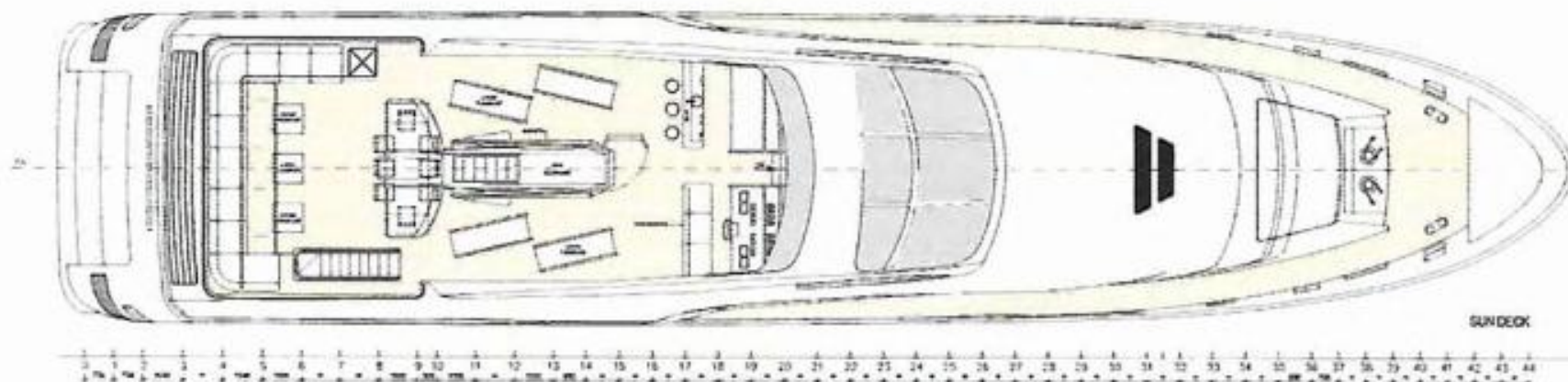
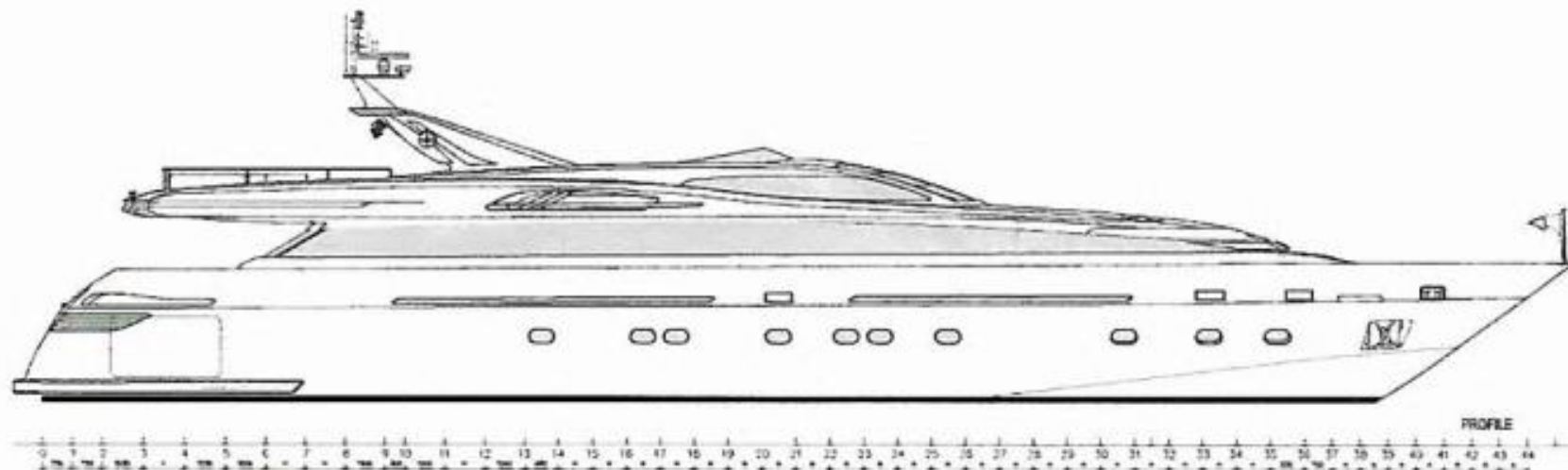




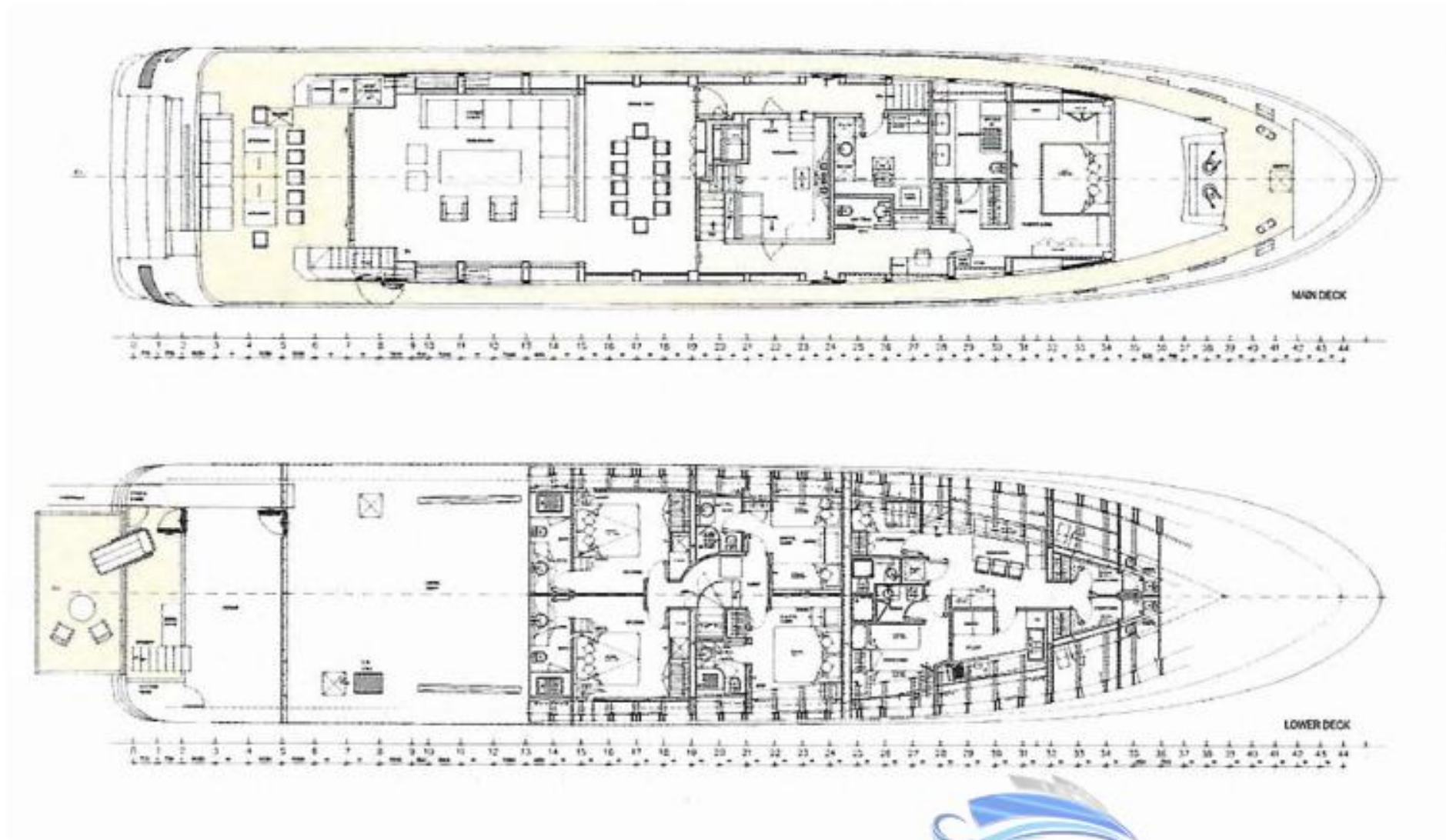




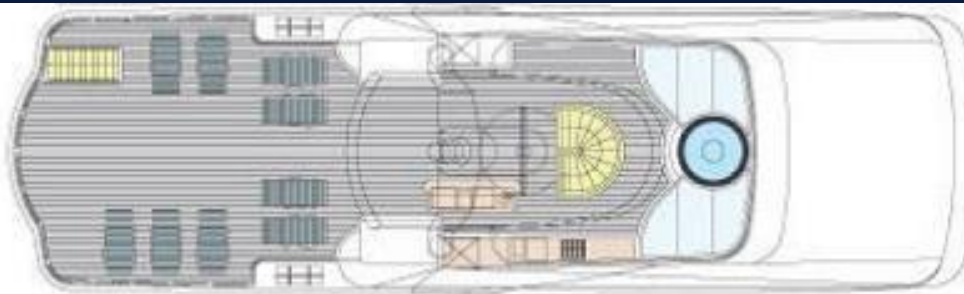




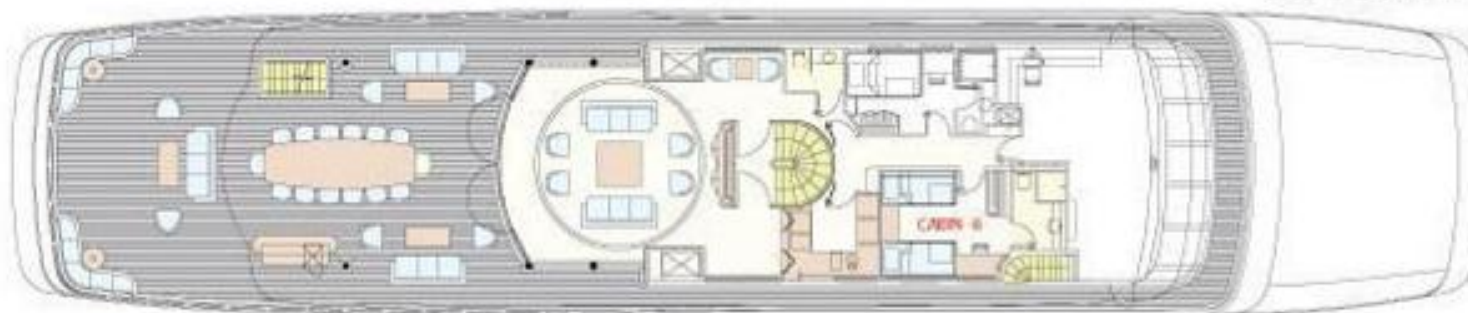




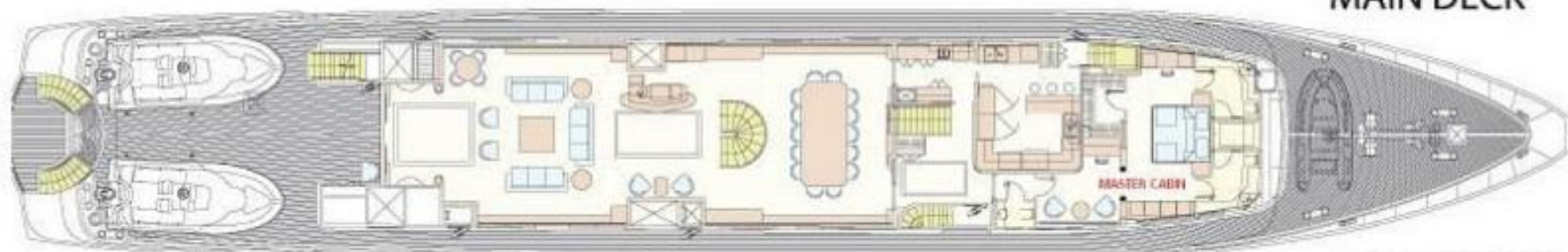




FLYBRIDGE



UPPER DECK



MAIN DECK



LOWER DECK

**FLACKTON YACHTING**  
Superyacht solutions



# MADO





## Table of Contents

### 1. FEATURES

### 2. SPECIFICATIONS

### 3. INFORMATION

## Admiral | 39M

### Disclaimer

Yachts offered are subject to availability. The information provided is believed to be correct but not guaranteed and may not be used for contractual purposes. Specifications provided for information only.



## 1. FEATURES

ABS 15-year special class survey completed 2024

- Full paint completed 2023
- Major refits in 2023 and 2017
- New KOHLER Generators in 2022
- Only her second Owners since delivery
- Large swim platform (circa 20 sqm) and sundeck (circa 60sqm)
- Exceptional interior style and ambiance
- Master cabin on main deck
- Fast Cruising speed of 28 knots

## 2. SPECIFICATIONS

### LOCATION - ATHENS:

#### Construction:

Aluminum Alloy  
Builder - ADMIRAL  
Classification - ABS  
G.R.T - 297  
GRP

#### Capacity:

Black water tank - 450 Ltrs  
Fuel Capacity - 34500 Ltrs  
Grey water tank - 450 Ltrs  
Water Capacity - 5300 Ltrs

#### Machinery:

Engine Hours - 3030 hrs  
Engine Model - 2 X MTU 16V 4000 M90  
Gearbox - 2 X ZF 7600V-RATIO 3.286:1A  
Generator Hours - Port: 2800 Hrs( Oct.2024 ) Starboard: 2800 Hrs ( Oct.2024 )  
Generators - 2 X KOHLER 55 EFOZDS, 1 X KOHLER 27 EFOZD ( 2600 Hrs )  
Propulsion - DETRA CUSTOM PROPELLERS

#### Fuel - Capacity: 34700 Ltrs:

Diesel

#### Electricity:

Electricity Type - 380V, 3P A/C, 50HZ  
Shore Power - 220V/380V THREE PHASES , 70 KVA

#### Auxiliary Machinery:

Air compressor  
Stabilizer - NO--- HAMPHREE INTERCEPTORS UNDERWAY 2 STATIONS  
Water maker - 320 Ltrs/hour



## 2. INFORMATION

### CAPITAL IMPROVEMENTS

#### **2024**

- ABS CLASS SURVEY 15 YEARS
- REPAINT VARIOUS SPOTS ACCORDING WARRANTY AND SURVEYOR
- REPLACE ENGINE OF THE WILLIAMS JET TENDER
- UPDATE AMX SYSTEMS –REPLACE I PADS –NEW 5G INTERNET MODEMS
- VARIOUS INTERIOR REFINISH AREAS , AND EXTERIOR TABLES
- VARIOUS TECHNICAL UPGRADES AND MAINTENANCE
- REPLACE TV IN THE MASTER CABIN WITH A NEW 55"

#### **2023-REFIT**

- 6 MONTHS REFIT IN THE DRY DOCK IN ATLAS SHIPYARD
- FULL REPAINT WITH AWLGrip BLACK/GREY COLOR
- REPLACE ALL EXTERIOR TEAK INSULATION , RUBBER
- REPLACE TEAK IN VARIOUS AREAS FOR ALUMINIUM PROTECTION
- NEW CONSTRUCTIONS IN THE SUNDECK , CORNER SOFA, BAR, TABLES, SUNBEDS
- REFINISH ALL WOODEN INTERIOR FLOORS
- MAINTAIN ALL INTERIOR MARBLES OF ALL CABINS
- REPLACE ALL INTERIOR CARPETS
- REPLACE TENDERS FENDER CONSTRUCTIONS WITH NEW ONE
- REPLACE EXTERIOR LIGHTS IN THE SUNDECK
- REPLACE BOILES
- UPGRADE AUDIO SYSTEMS
- VARIOUS TECHNICAL UPGRADES AND MAINTENANCE

#### **2022**

- REPLACE KOHLER GENERATORS WITH NEW TYPE 55KW DURING DRYDOCK
- VARIOUS PAINT MAINTENANCE WORKS
- VARIOUS INTERIOR REFINISH
- VARIOUS TECHNICAL UPGRADES AND MAINTENANCE

#### **2017-REFIT**

- COMPLETE PAINT JOB. THE BOAT WAS PAINTED BLACK AND GRAY.
- INTERIOR CHANGES TO SOFAS & BATHROOMS
- CHANGES TO THE YACHT'S PIPING FOR A/C.
- NEW TENDERS.



